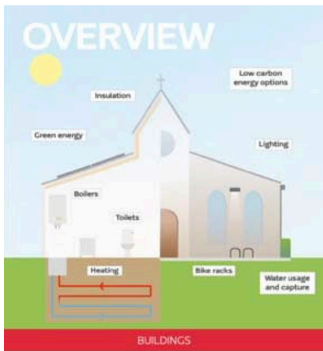


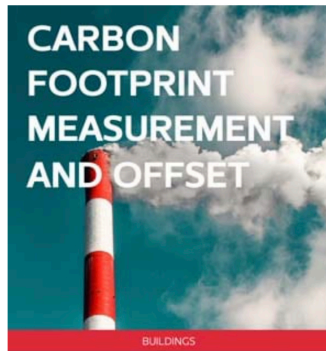
Eco Church Resources: Buildings



ECO CHURCH
A FOCUS ON PROJECTS

ALLCHURCHES TRUST LIMITED
OWNERS OF ECCLESIASTICAL INSURANCE GROUP

www.ecochurch.org.uk



ECO CHURCH
A FOCUS ON PROJECTS

ALLCHURCHES TRUST LIMITED
OWNERS OF ECCLESIASTICAL INSURANCE GROUP

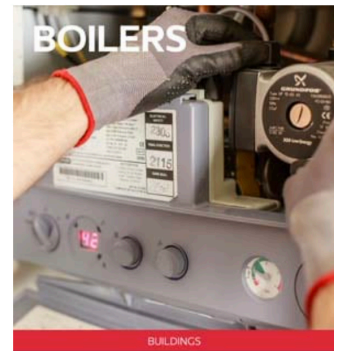
www.ecochurch.org.uk



ECO CHURCH
A FOCUS ON PROJECTS

ALLCHURCHES TRUST LIMITED
OWNERS OF ECCLESIASTICAL INSURANCE GROUP

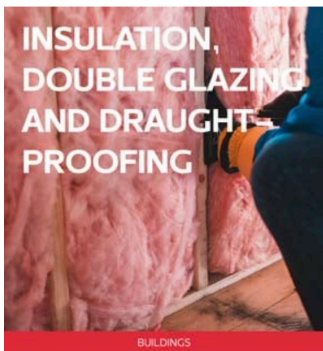
www.ecochurch.org.uk



ECO CHURCH
A FOCUS ON PROJECTS

ALLCHURCHES TRUST LIMITED
OWNERS OF ECCLESIASTICAL INSURANCE GROUP

www.ecochurch.org.uk



ECO CHURCH
A FOCUS ON PROJECTS

ALLCHURCHES TRUST LIMITED
OWNERS OF ECCLESIASTICAL INSURANCE GROUP

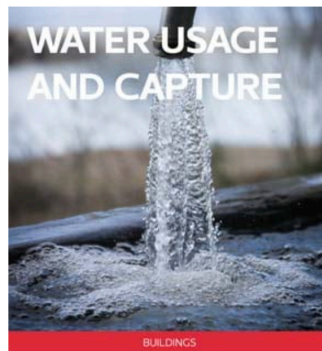
www.ecochurch.org.uk



ECO CHURCH
A FOCUS ON PROJECTS

ALLCHURCHES TRUST LIMITED
OWNERS OF ECCLESIASTICAL INSURANCE GROUP

www.ecochurch.org.uk



ECO CHURCH
A FOCUS ON PROJECTS

ALLCHURCHES TRUST LIMITED
OWNERS OF ECCLESIASTICAL INSURANCE GROUP

www.ecochurch.org.uk

Sharing our story: A rain garden planter at Trinity Church, Southover, Lewes

CASE STUDY

In 2000, the Sussex Team of Lewes suffered serious flooding. With climate change this once-in-40-year event has the potential to become a more regular occurrence. Transition Team Lewes started a Rain Garden for Lewes project with which Trinity Church became involved.

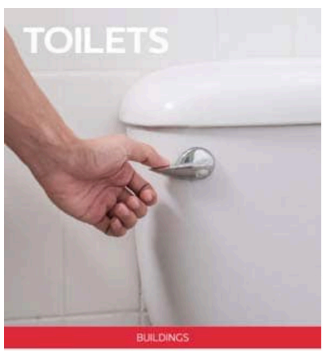
Floods caused by rain and tide are perhaps best dealt with by local and national government, and work carried out since the 2000 event now protects most of the town. Flood Proofing, on the other hand, is a rather more local phenomenon in its nature and implementation. It is usually located by run-off from roofs and gardens - and its risk may be minimised by local action.

To illustrate this point, Transition Team Lewes and the Trinity Creation Care team have installed a rain garden planter at the church. This kind of planter slows down the flow of water from roof to sewer, giving the water time to soak with a buffer. However, as a bonus, the planter soaks up and grows plants out a certain amount of pollution.

ECO CHURCH
A FOCUS ON PROJECTS

ALLCHURCHES TRUST LIMITED
OWNERS OF ECCLESIASTICAL INSURANCE GROUP

www.ecochurch.org.uk



ECO CHURCH
A FOCUS ON PROJECTS

ALLCHURCHES TRUST LIMITED
OWNERS OF ECCLESIASTICAL INSURANCE GROUP

www.ecochurch.org.uk

Sharing our story: Rainwater harvesting system for flushing toilets at Stratford Methodist Church

CASE STUDY

At Stratford, from the church's Eco Church team logs, we installed a 500-litre rainwater harvesting system in 2014. It works very well, taking about 70,000 litres of rain water annually for flushing the toilets. It was not cheap (£3k) and, as we have no water meter and the water bill for religious settings is low, financially we had to gain. However, our building is heavily used by the community so the use of rainwater for flushing the toilets, together with our support of the local swimming pool, is a very good indication of our commitment to a sustainable world. If your church's building is heavily used and the insulation is cheap, it is a good way to save the water.

Water in a house

ECO CHURCH
A FOCUS ON PROJECTS

ALLCHURCHES TRUST LIMITED
OWNERS OF ECCLESIASTICAL INSURANCE GROUP

www.ecochurch.org.uk



ECO CHURCH
A FOCUS ON PROJECTS

ALLCHURCHES TRUST LIMITED
OWNERS OF ECCLESIASTICAL INSURANCE GROUP

www.ecochurch.org.uk



ECO CHURCH
A FOCUS ON PROJECTS

ALLCHURCHES TRUST LIMITED
OWNERS OF ECCLESIASTICAL INSURANCE GROUP

www.ecochurch.org.uk



ECO CHURCH
A FOCUS ON PROJECTS

ALLCHURCHES TRUST LIMITED
OWNERS OF ECCLESIASTICAL INSURANCE GROUP

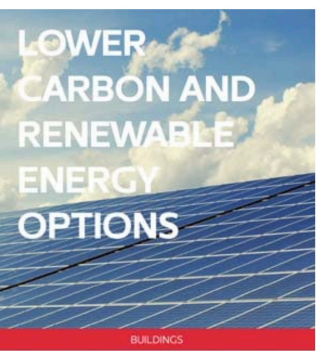
www.ecochurch.org.uk



ECO CHURCH
A FOCUS ON PROJECTS

ALLCHURCHES TRUST LIMITED
OWNERS OF ECCLESIASTICAL INSURANCE GROUP

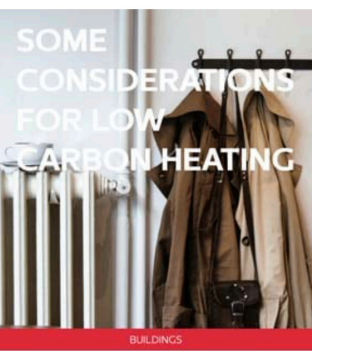
www.ecochurch.org.uk



ECO CHURCH
A FOCUS ON PROJECTS

ALLCHURCHES TRUST LIMITED
OWNERS OF ECCLESIASTICAL INSURANCE GROUP

www.ecochurch.org.uk

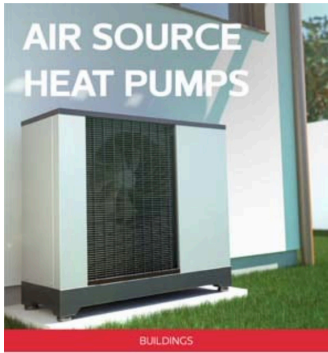


ECO CHURCH
A FOCUS ON PROJECTS

ALLCHURCHES TRUST LIMITED
OWNERS OF ECCLESIASTICAL INSURANCE GROUP

www.ecochurch.org.uk

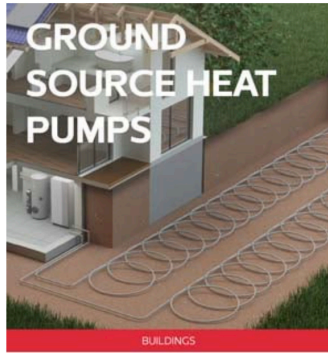
Eco Church Resources: Buildings continued



AIR SOURCE HEAT PUMPS

BUILDINGS

ECO CHURCH
ALLCHURCHES TRUST LIMITED
OWNERS OF ECCLESIASTICAL INSURANCE GROUP
www.ecochurch.org.uk



GROUND SOURCE HEAT PUMPS

BUILDINGS

ECO CHURCH
ALLCHURCHES TRUST LIMITED
OWNERS OF ECCLESIASTICAL INSURANCE GROUP
www.ecochurch.org.uk

BUILDINGS CASE STUDY

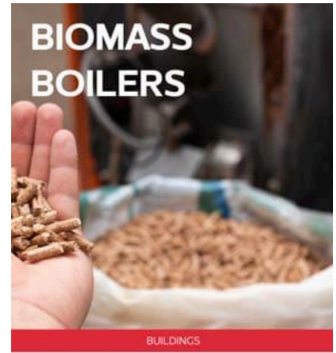
Sharing our story; Installing a Ground Source Heat Pump at St Catherine and St Peter, Burbage

This is St Catherine's Church prior to the heating system works. The old boiler was replaced in a wooden plant room which was designed to meet modern requirements and gas regulations. The boiler was gas-fired and it took many hours to get the building up to a reasonable temperature. The boiler never stopped firing, as the temperature was never high enough to activate the room thermostat set at around 20°C. The room boiler thermostat would occasionally stop the boiler as it was too hot! The boiler was obsolete and parts were no longer available. We were told it would cost around £300,000 to replace the system to meet modern requirements and gas regulations.

St Catherine is an environmentally friendly church and we hold the Gold Eco Church award. So it was natural to seek a green source of heating. Biomass burning and air-to-air heat pumps were looked at, but ground source was considered to be the better option.



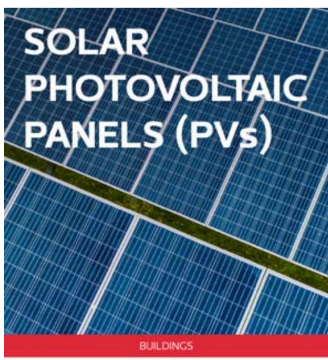
ECO CHURCH
ALLCHURCHES TRUST LIMITED
OWNERS OF ECCLESIASTICAL INSURANCE GROUP
www.ecochurch.org.uk



BIOMASS BOILERS

BUILDINGS

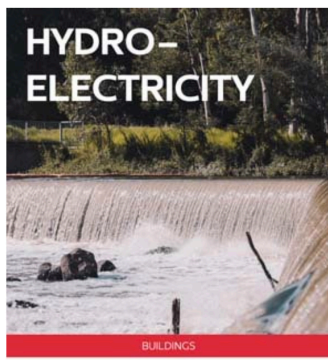
ECO CHURCH
ALLCHURCHES TRUST LIMITED
OWNERS OF ECCLESIASTICAL INSURANCE GROUP
www.ecochurch.org.uk



SOLAR PHOTOVOLTAIC PANELS (PVs)

BUILDINGS

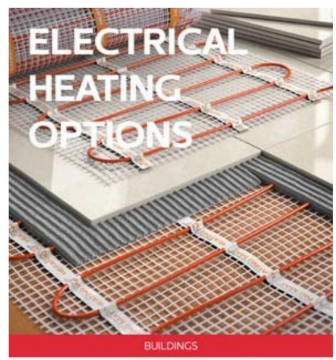
ECO CHURCH
ALLCHURCHES TRUST LIMITED
OWNERS OF ECCLESIASTICAL INSURANCE GROUP
www.ecochurch.org.uk



HYDRO-ELECTRICITY

BUILDINGS

ECO CHURCH
ALLCHURCHES TRUST LIMITED
OWNERS OF ECCLESIASTICAL INSURANCE GROUP
www.ecochurch.org.uk



ELECTRICAL HEATING OPTIONS

BUILDINGS

ECO CHURCH
ALLCHURCHES TRUST LIMITED
OWNERS OF ECCLESIASTICAL INSURANCE GROUP
www.ecochurch.org.uk